

Monday 26th October 2020



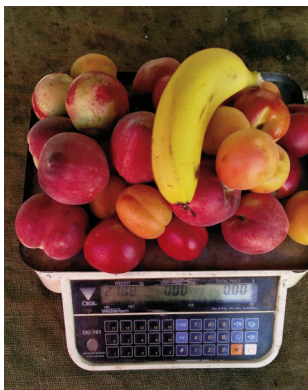
## Let's have a chat about our Farmers Market

Some nine years ago, then club members Jorgen and Christine Johannsen came to the board with the idea that we could have a major impact on the community of Concord and at the same time advance the face of Rotary to the general public by creating a true "**Farmers Market**" based on the extremely successful "**Capital Region Market**" run weekly by the Rotary Club of Hall in Canberra, albeit at a more reduced scale.

Following extensive work and a great commitment in time, Bill Paterson achieved DA approval from Canada Bay Council and operation **Concord Farmers Market** commenced operation in March 2012 with 19 stall holders and by February 2014 we had the grand total of 26. With

much promotion - signage, banners and pamphlets designed and printed by Michael Brown, Peter Rogers sending up to 600 text messages to shoppers prior to each market advertising the product with continual Facebook promotion and of course Santino's "electrifying" sign - the market grew in size, quality and prestige.

Tents were purchased (an ongoing cost it seems), tables and chairs accumulated, banners big and small created, purpose-built trolleys designed and created by the ever generous Santino Cassiniti who also finally installed two big, orange power boxes which obviated the





need for temporary power boxes to be set up prior (really early) to each market and then dismantled after (mostly really late) by Concord hospital electrician Tommy Rich who gave generously of his time.

For the first few years we were located on the bottom area of the carpark which, with a little rain would cover a lot of the area in pools of water which would have to be swept away by marauding Rotarians, feverishly wielding large brooms in order to protect the footwear of our shoppers all the while selflessly ignoring the state of their own. The final move to higher ground has been a blessing in that regard.

The learning curve has been a long one. Initially we had traffic managers directing shoppers to car spaces (sans walkie-talkies), signs indicating "in" and "out", direction for cars to follow, auditors counting cars in and out, an information booth and a distinctive lack of understanding as to just what happens when strong gusts of wind invade a group of tents sitting around on a bitumen covered car park, not to mention just how much work is







required to set up and pack down a market twice a week. We have learnt a lot in the intervening years.

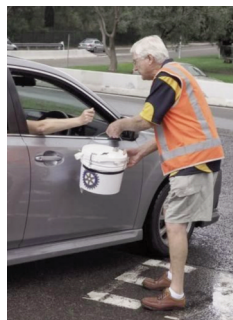
We now know that people can park cars by themselves without guidance by amateurs, they instinctively know where entrances and exits are, we now have arrows on the car park indicating vehicle direction, the number of cars entering the park is irrelevant particularly if junior football matches are in progress and as long as the stall holders are happy with the market, Santino has organised weights to prevent tents from cutting a swathe through the market if windy, and best of all we have Peter Smith. A Rotarian of unequalled community commitment, When Dee Covington suggested we get younger help, Peter saw an opportunity for both the Rotaract Club of Strathfield and the Homebush Boys High Interact Club to be involved in a worthwhile project with each club supplying members to assist in the heavy lifting in return for our donation of the

proceeds from our charity bucket.

We are presently attempting to wear down our fourth Market Manager (Christine Johannsen, Margaret Bain-Smith, Dee Covington have all fled) Helen McCaffrey, who micro-manages the stall holders through continual email and phone contact, listens patiently(?) to complaints and requests, negotiates, worries about attendance and weather before turning her attention to the ensuing market meeting and then the next market.

The members over the years have been phenomenal with at least 25 present members there at the beginning and still active. While not always running smoothly, in its own way every market is a success and this is in no small way due to the efforts of our members. Ken Wright has been tireless in all areas since it's inception, Santino has been and still is a stalwart in supply of equipment and manpower, Patrick Legey rarely misses any market, Richard Bell and Di Hunter could successfully run a BBQ in a snowstorm, Peter Rogers gives so much of his time to promotion and the search for new stall holders, I'm gratified he doesn't require payment, Peter and Maree Dowley have made themselves indispensable to our success and almost the entire membership are involved on a monthly basis.

HOWEVER, we must be mindful that many members are approaching the time when "heavy lifting" becomes problematic and younger, fitter members must step up. Rotary is to all intent and purpose a charitable organisation and without funds to assist in the wonderful things we achieve, we become a social club. Our markets are our prime source of income and if we can no longer manage the work involved in their success, they along with this Rotary Club ***WILL CEASE TO EXIST!*** Let's hope that never eventuates.





## Economic and Community Development Month

The work of Rotary begins in the community, and every community has its own unique needs and concerns. While we serve in countless ways, we've focused our efforts in six key areas to maximize our impact.

These areas encompass some of the world's most critical and widespread humanitarian needs. Rotary members planning new service projects are encouraged to consider these areas and

the many opportunities for innovative projects within them. The six areas of focus Rotary International and The Rotary Foundation have adopted as organizational priorities are:

- Peace and conflict prevention/resolution • Disease prevention and treatment
- Water and sanitation • Maternal and child health • Basic education and literacy
- Economic and community development

**Economic and Community Development** is one such area of focus that Rotary has asked all clubs to focus on, especially in October.

1.4 billion people, nearly half of them employed, live on less than \$1.25 a day.

The Rotary Foundation enables Rotarians to invest in people by creating sustainable, measurable and long-term economic improvements in their livelihoods and communities by promoting economic and community development and reducing poverty in underserved communities through training, well-paying jobs, and access to financial management institutions. Projects range from providing people with equipment to vocational training.

Rotary members all over the world work to strengthen local entrepreneurs and community leaders, particularly women, in impoverished communities.

Every community has different needs and different opportunities to serve. Now is the time to ask the right questions, identify real needs, and make the greatest possible impact with the time, energy, and resources we have at our disposal.





## A short narrative history of Rhodes and Concord (cont.)

by Nicola Byrne

from last week...It is hard to imagine today that the many streets branching to the east off Concord Road were cut through a single property. As the only estate in the area for some time, the Brays maintained their home as a social centre for inhabitants of early Concord. They were also well aware of the dangers to travellers on the undeveloped roads through heavily timbered forest and murky swamp. Multiple accounts of their hospitality exist. An 1897 newspaper issue reports a children's dance hosted by Mrs Mary Bray, in which her five children 'received about sixty guests in "plain and fancy dress" in the drawing room.' ... now read on...



*Braygrove House*

Braygrove was left untouched until a local industrial boom occurred near the start of the 20th century, when R. Tulloch & Company purchased the estate and repurposed the house as their administrative complex.



*Tulloch's Phoenix Ironworks*

Decades on, new environmental legislation and deindustrialisation saw the closure of the factories that had grown to dominate the peninsula. Tulloch's announced the closure of their plant in 1974, as proclaimed with the eerily familiar newspaper headline, '*TULLOCH'S SHUTDOWN: Workers fight to save jobs*'.

The NSW Housing Commission eventually purchased the site for medium-density housing, and the Braygrove house was razed with the rest of the factory. Churchill Tucker Reserve was developed over part of the original site, separated from McIlwaine Park by Concord Road.

At the shoulder of an off-white commercial building, the pathway through the thick-trunked trees of Churchill Tucker Reserve is marked by a green lampstand. The inscription reveals it was erected in honour of Tulloch founder Robert. Deeper into the reserve, a large shady fig known as the 'Strike Tree' to the factory workers, was also left in commemoration. It blends in with the other trees, which today offer passing white-collar commuters a brief reprieve from the sun.

Many of the commuters found passing through Churchill Tucker Reserve are heading for Rhodes railway station, a modern body of grey concrete complemented by teal glass elevator towers and orange signage. It is hardly distinguishable from the station one stop closer to Sydney, Concord West. Looking at this contemporary façade, one could be forgiven for not realising it is heritage-listed.



*Rhodes Railway Station 1933*

'Poor,' Richard pronounces the local public transport. His speech is characterised by how carefully he chooses his words, polite yet honest. He explains his accommodation had been on the far side of the peninsula to the station. '*The buses run infrequently. And the layout of the station is such that it has one set of stairs.*' He mentions



this as an issue due to the over-crowding on the platforms. The heritage-listed status limits the extent to which the station can be redeveloped to address this.

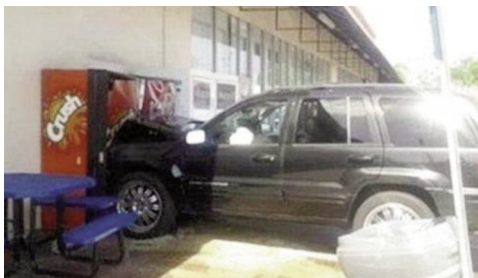
Local papers suggest that the opening of the station in 1886 attracted significant excitement: it was the first station on the new Strathfield—Hornsby line, and promised to open the municipality to the rest of Sydney. While it delivered on this, local expectations of improved transport from the existing horse-bus, bike and foot, were not met. Comments included:

*'No station masters are employed, as trains only set down and pick up passengers when required... The platforms are of little use for settling population on the land.'*

The railway became a landscape detail for most. Nonetheless, in time it became a touch-stone for memories of a Rhodes lost to industrial development. A remembrance from the 1930s of the Walkers' Rhodes House goes:

*'Travellers on the railway from Strathfield to Hornsby may note a large factory building about half a mile beyond the Rhodes platform... Ten years ago, the traveller would have seen on the spot, prettily situated on the bank of the river, a picturesque and spacious old stone cottage with wide flagged verandas, roomy stables and outbuildings standing in an old-world garden.' .....to be continued.....*

## Signs theme week: Oh the irony!







Ishu Rawat - acceptance speech

## A short letter to the club

Hi all,

I am pleased to advise that Ishu Rawat, who is a long-time member of HBHS Interact Club has been appointed/elected as School Captain for 2021.

Ishu attended RYPEN in April 2019 and is a regularly volunteer at all Interact fundraising functions – including being a regular at the Concord Markets.

Ishu has also volunteered with the Red Shield Appeal for at least the last 2 years (except 2020!)

Regards, Peter Smith

**OPENING  
OPPORTUNITIES  
THROUGH  
ROTARY**



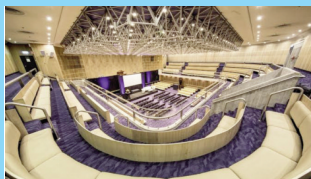
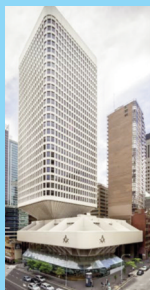
## District 9675 Conference 2021

Friday 19 March to Sunday 21 March 2021  
Sydney Masonic Centre  
66 Goulburn St., Sydney, NSW 2000

Call: (02) 9284 2888

Website: <https://www.smcfc.com.au/>

Facebook <https://www.facebook.com/smcfc.au/>



DG Warwick invites us to join him in the centre of Sydney to experience wonderful speakers, to enjoy the fellowship that is Rotary and to open opportunities for our club, our community and for the wider world.

Very early bird rate: **\$195** - Register & pay before 31 October 2020

Early bird rate: **\$235** - Register & pay before 15 January 2021

Full registration: **\$275** - Register & pay after 15 January 2021

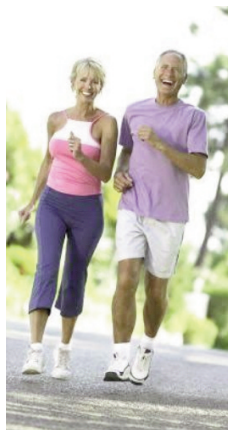
Day/event rates are available at: <https://rotarydistrict9675.org/>

### Taking care of your mental health during COVID-19

<p><b>Stay connected</b></p> <p>Keep in touch with friends and family via email, social media, video conferencing or telephone</p>	<p><b>Maintain a healthy lifestyle</b></p> <ul style="list-style-type: none"> <li>Establish a regular daily routine</li> <li>Get plenty of sleep and eat nutritious meals</li> <li>Engage in exercise and physical activities that you like</li> </ul>	<p><b>Stay positive</b></p> <p>Remember that this period of self-isolation or quarantine is temporary and follows expert advice to help contain the virus</p>	<p><b>Stay informed</b></p> <p>Obtain accurate information from reliable sources like the Australian Government and the World Health Organization</p>	<p><b>Seek support</b></p> <p>Mental health services are available if you're feel anxious, worried or overwhelmed</p>
--	--	---	---	---

[healthdirect.gov.au/mental-health-and-wellbeing](https://healthdirect.gov.au/mental-health-and-wellbeing)

healthdirect



**and don't forget regular exercise!**

If you don't feel you can run or jog and you don't want to walk, get onto YouTube & search

**More Life Health Seniors.....**

& get moving!



## Never Bulla Shita you're Italian Mama

Mrs. Ravioli visited her son Anthony for dinner who lived with a female roommate, Maria. During the evening, his mother couldn't help but notice how attractive his roommate was.

While watching the two interact, she started to wonder if there was more between Anthony and his roommate than met the eye. Reading his mom's thoughts, Anthony volunteered, *"I know what you must be thinking, but I assure you, Maria and I are just roommates."*

About a week later, Maria said to Anthony, *"Ever since your mother came to dinner, I've been unable to find the silver sugar bowl. You don't suppose she took it, do you?"*

*"Well, I doubt it,"* he said *"but I'll ask."* So he sat down and wrote an email:

*Dear Mama,*

*I'm not saying that you "did" take the sugar bowl from my house; I'm not saying that you "did not" take it. But the fact remains that it has been missing ever since you were here.*

*Your Loving Son*

Several days later, Anthony received a response email from his Mama which read:

*Dear son,*

*I'm not saying that you "do" sleep with Maria, and I'm not saying that you "do not" sleep with her. But the fact remains that if she was sleeping in her OWN bed, she would have found the sugar bowl by now.*

*Your Loving Mama*



## ROTARY'S CODE OF CONDUCT

As a Rotarian, I will:

- 1) Exemplify the core value of integrity in all behaviours and activities.
- 2) Use my vocational experiences and talents to serve in Rotary.
- 3) Conduct all of my personal, business and professional affairs ethically, encouraging and fostering high ethical standards as an example to others.
- 4) Be fair in all dealings with others and treat them with the respect due to them as fellow human beings.
- 5) Promote recognition and respect for all occupations which are useful to society.
- 6) Offer my vocational talents: to provide opportunities for young people, to work for the relief of the special needs of others and to improve the quality of life in my community.
- 7) Honour the trust that Rotary and fellow Rotarians provide and not do anything that will bring disfavour or reflect adversely on Rotary or fellow Rotarians.
- 8) Not seek from a fellow Rotarian a privilege or advantage not normally accorded others in a business or professional relationship.

**Good  
decisions  
don't just  
happen.**

**Ask  
yourself  
these 4  
questions:**



1. Is it the TRUTH
2. Is it FAIR to All Concerned?
3. Will it build GOODWILL and Better friendships?
4. Will it be BENEFICIAL to All Concerned?





## BOARD MEMBERS 2020/21

**President:** Angela Porritt

**President Elect:** Cornelia Day

**Secretary:** Allan Petersen

**Treasurer:** Ken Wright

**Immediate PP:** Charmaine Langley

**Farmers Market:** Helen McCaffery

**Farmers Market:** Helen McCaffery

**Club Service:** James Chin

**International Service:** Ian Gilkes

**Community Service:** Daniel Music

**New Generations:** Peter Robinson

**Vocational Service:** Peter Reynolds

**Membership:** Michael Brown

**Assistant International Service Director:** Maree Ohlin

## CLUB MEMBERS

**Bhavnagri Viraf**

Strucural Engineering

**Brown David (Beverley)**

Graphic Art (Retired)

**Brown Michael (Liane)**

Graphic Art (Pre-Press)

**Cassaniti Santino (Marie)**

Funeral Services

**James Chin**

Medicine - Health & Lifestyle

**Day Cornelia**

Real Estate - Commercial

**Dowley Peter (Maree)**

Security Services

**Ferrari Kevin**

Entrepreneur

**Ferguson Garry (Jennifer)**

Geological Science

**Gagliano Cheryl (Tony)**

Legal Assistant

**Gilkes Ian (Sue)**

Printing Commercial

**Guerin Roger (Kitty)**

Engineering - Local Government

**Hughes Don (Judith)**

Education - Science

**Hunter Dianne**

Accountancy - Admin

**Kane Ray (Judith)**

Transport (Retired)

**Kang Alice**

Director Marketing &  
Community Relations,  
Concord Hospital

**Langley Charmaine**

Project Manager Higher Education

**Legey Patrick (Annmaree)**

Pest Control

**Long Kevin (Anna)**

Promotional Products

**Love Judy**

Aged Care Aministration

**Ly Steven**

Planning Logistics

**McCaffrey Helen (Bill)**

Corrosion Control

**McCarthy Phillip (Jillian)**

Accounting - Chartered

**McIntosh Graham**

Pharmacy (retired)

**Murray Ken**

Education - Secondary (ret)

**Music Daniel**

Facilities Management

**Ohlin Maree (Peter)**

IT Project Management

**Paterson Bill (Doreen)**

Services & Development  
Counselling

**Petersen Allan (Welwyn)**

Education - Primary

**Petrie Stephen (Cathryn)**

Mechanical Engineering

**Porritt Angela (Rhys)**

Database Development

**Reynolds Peter (Mariana)**

Education - Languages

**Rez Simon**

Law

**Robertson Jim (Florence)**

Mediation Services

**Robinson Peter (Barbara)**

Marketing and Sales

**Rogers Peter (Mary)**

Mystery Shopping

**Scott Evelyn**

Govt Services (Retired)

**Williamson David**

Building Administration

**Wright Alan (Lorna)**

Paint Manufacture

**Wright Ken (Georgia)**

Accounting Services

**Xu Grant (Cynthia)**

IT Professional

## HONORARY MEMBERS

#\* Bell, Richard (Christine)

# Davidson, Carole

# Kistan, Nesan (Cheryl)

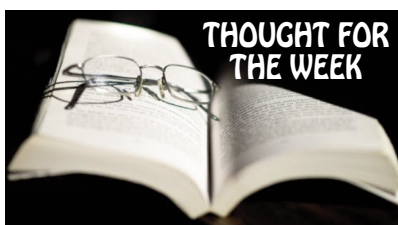
# Michel, Lois  
McCaffrey, William (Helen)

#\* Rodway, Barry (Norah)  
Spence, Wal (Elaine)

\*\*\* Smith, Peter (Marlene)

\* Past President # Paul Harris Fellow

\*\* Past Pres. Rotary Club of Strathfield



A Batchelor is  
a guy that  
never made  
the same  
mistake once.

Phyllis Diller

26th October 2020

